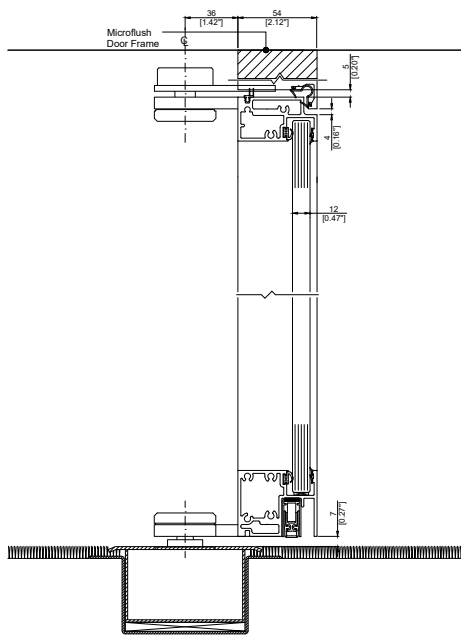


Doors

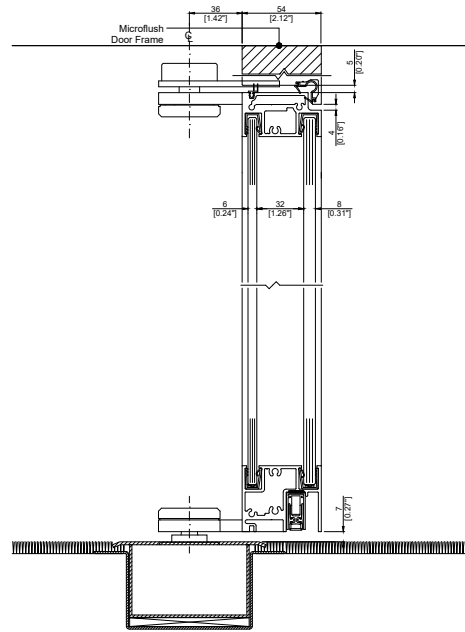
Product Data Sheet



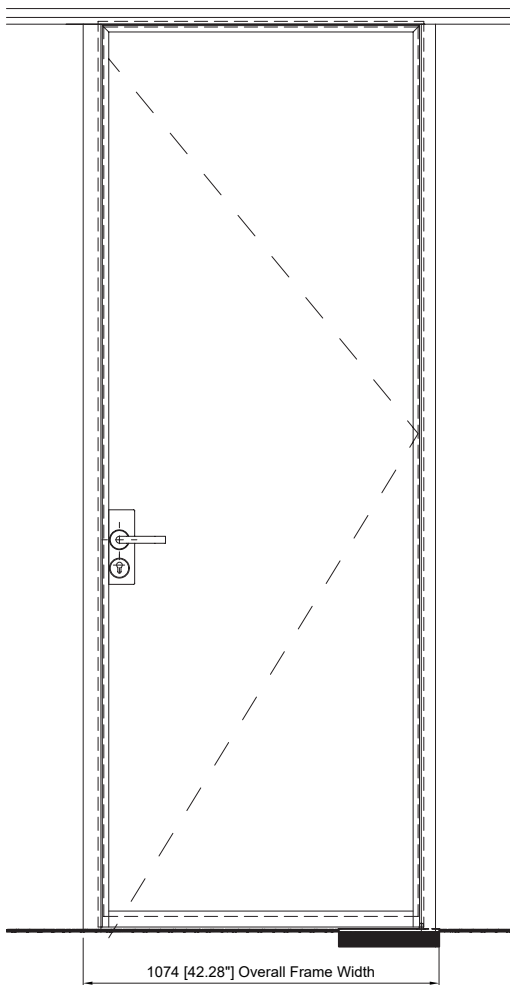
PurOptima



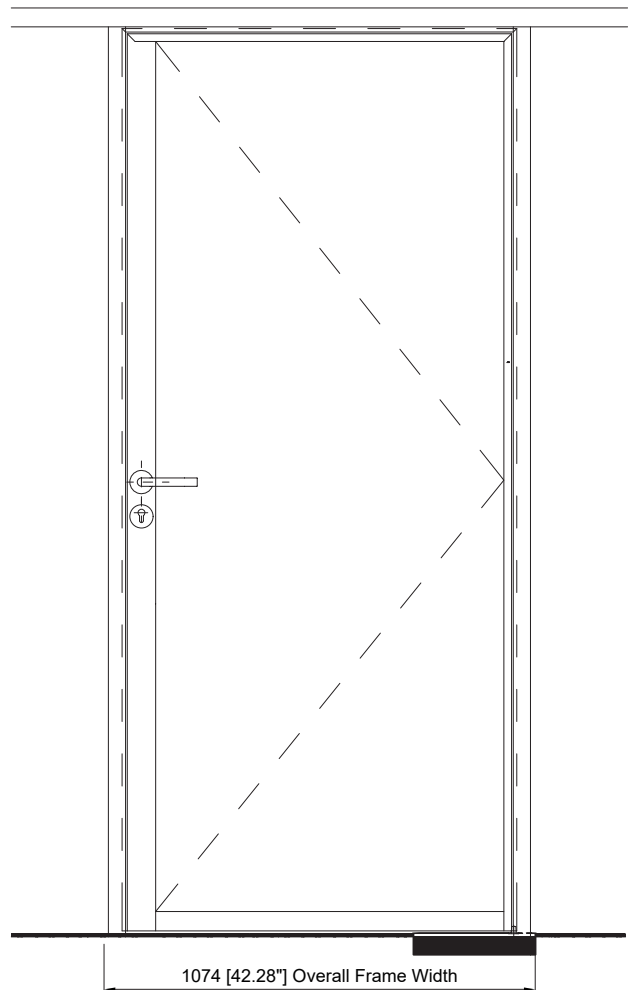
SECTION THROUGH SINGLE GLAZED
EDGE SYMMETRY DOOR ON OFFSET PIVOTS
(SCALE 1:2)



SECTION THROUGH DOUBLE GLAZED
EDGE SYMMETRY DOOR ON OFFSET PIVOTS
(SCALE 1:2)



ELEVATION SHOWING DOUBLE GLAZED
EDGE SYMMETRY DOOR ON OFFSET PIVOTS
(SCALE 1:15)



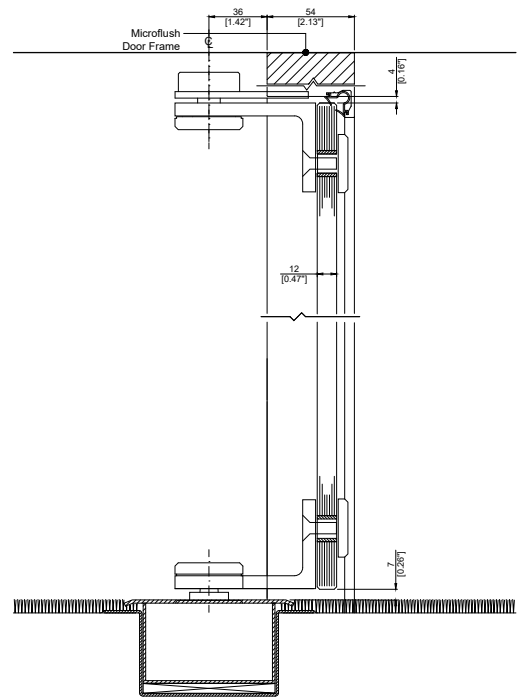
ELEVATION SHOWING DOUBLE GLAZED
EDGE AFFINITY DOOR ON OFFSET PIVOTS
(SCALE 1:15)

Product facts

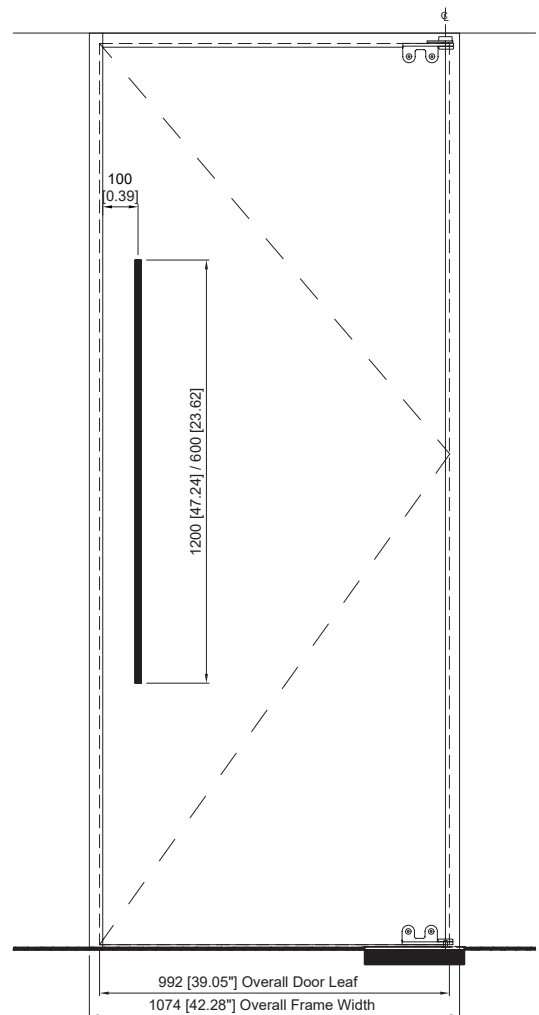
- Wide range of door options
- Edge series of glass doors - Symmetry and Affinity
- Axile series of glass doors - Pulse and Clarity
- Timber doors - 44mm (1.73") thick non-rebated or 54mm (2.12") thick rebated in Microflush aluminum door frame
- Maximum door height 3000mm (118.11")
- Numerous ironmongery and locking options for each door type
- Manufactured at Optima's UK factory and fabricated in the US

Acoustics

- Edge Symmetry:
Single glazed - 35 STC / Double glazed - 41 STC
- Edge Affinity:
Single glazed - 39 STC / Double glazed - 42 STC
- Axile Clarity:
Single glazed - Rw32dB
- Timber doors:
44mm thick timber door in Microflush frame - Rw31dB
54mm thick timber door in Microflush frame - Rw33dB

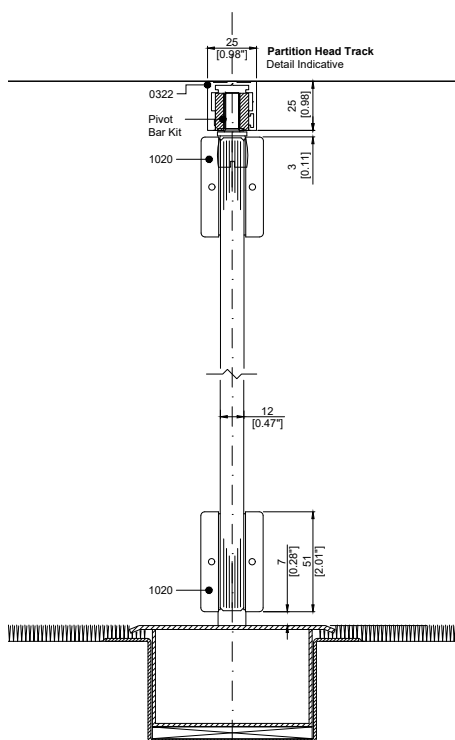


SECTION THROUGH TYPICAL
AXILE CLARITY DOOR WITH
QUAD PIVOT IN MICROFLUSH FRAME
(SCALE 1:2)

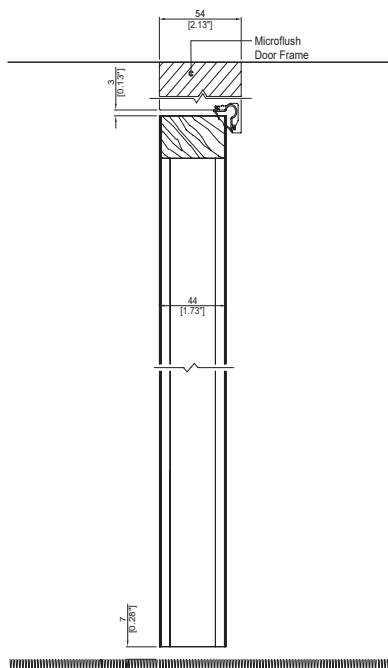


ELEVATION SHOWING TYPICAL
AXILE CLARITY DOOR WITH QUAD PIVOT
IN MICROFLUSH FRAME
(SCALE 1:15)

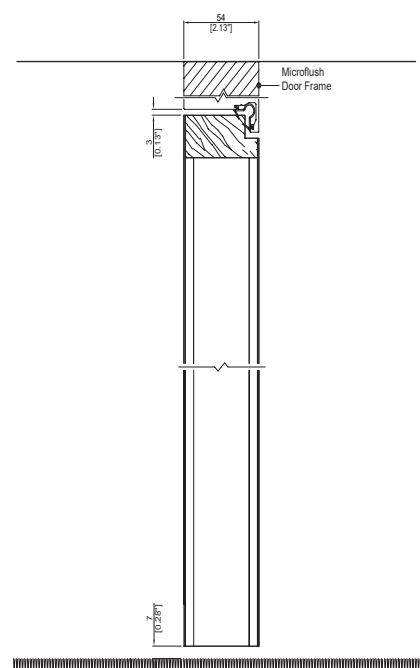




SECTION THROUGH TYPICAL
AXILE PULSE DOOR
(SCALE 1:2)



SECTION THROUGH TYPICAL
44mm [1.73\"] THICK HINGED TIMBER DOOR
IN MICROFLUSH FRAME
(SCALE 1:2)



SECTION THROUGH TYPICAL
54mm [2.12\"] THICK HINGED TIMBER DOOR
IN MICROFLUSH FRAME
(SCALE 1:2)

Product Comparison

Partition/ Wall Range	Acoustics STC/ RwdB up to max value	Single/ Double Glazed		Head Track/Floor Track					Deflection head options ±25mm (0.98\")/40mm (1.57\")	
		Single	Double	25mm (0.98\") Depth	50mm (1.96\") Depth	25mm (0.98\") Width	36mm (1.41\") Width	40mm (1.57\") Width	Internal	External
Revolution 100, PurOptima Adaptable Wall & Shoreditch Edition	Rw51dB	✓	✓	✓	✓				✓	✓
Revolution 54 Plus & Shoreditch Edition	STC 46	✓	✓	✓	✓					✓
PurOptima 117 Plus & Shoreditch Edition	Rw38dB	✓		✓	✓	✓	✓	✓	✓	✓

Range of RAL colors and special paint finishes, powder coated or anodized

Door Range	Acoustics STC/ RwdB up to max value	Single/Double Glazed		Swing or sliding		Compatible with		
		Single	Double	Swing	Sliding	PurOptima 117 Plus	Revolution 54 Plus	Revolution 100
Kinetic	Rw36dB	✓			✓	✓		
Axile	Rw33dB	✓		✓		✓		
Edge	Rw42dB	✓	✓	✓		✓	✓	✓
Elite	Rw45dB		✓	✓	✓			✓
Timber	Rw33dB		n/a	✓		✓	✓	✓

Range of RAL colors and special paint finishes, powder coated or anodized
Range of door hardware including pull/lever handles, locks and hinges

Product overview

System type	Edge Series: Symmetry and Affinity - single or double glazed framed pivoting glass doors. Axile Series: Pulse and Clarity - single glazed frameless glass doors Timber Doors: 44mm (1.73") thick non-rebated and 54mm (2.12") thick rebated timber door in Microflush aluminum frame
Glass thickness	Edge Series: Single glazed Symmetry - 12mm (0.47") heat soaked toughened glass Double glazed Symmetry - 6mm (0.23") + 8mm (0.31") heat soaked toughened glass Single glazed Affinity - 12.8mm (0.5") acoustic laminated glass Double glazed Affinity - 6mm (0.23") heat soaked toughened glass + 8.8mm (0.34") acoustic laminated glass Axile Series: Pulse - 12mm (0.47") heat soaked toughened glass Clarity - 12mm (0.47") heat soaked toughened glass
Frame dimensions	Edge Series: Symmetry - 54mm (2.12") Microflush aluminum door frame; door leaf frame 30mm (1.18") lockable stile with 18mm (0.70") visible framework on corridor side when door is in closed position Affinity - 54mm (2.12") Microflush aluminum door frame; door leaf frame 66mm (2.59") lockable stile with 67mm (2.63") visible on the corridor side when door is in closed position Axile Series: Pulse - no frame 12.8mm (0.5") thick glass available as standard, subject to panel width, height and acoustic rating Clarity - frameless door leaf within 54mm (2.12") Microflush aluminum door frame Timber Doors: 54mm (2.12") Microflush aluminum door frame
Lock options	Edge Series: Dead lock, sash lock or latch Axile Series: Patch lock or lockable pull handle Timber Doors: Dead lock, sash lock or latch
Hanging options	Edge Series: Offset pivot Axile Series: Pulse - floor spring with inline pivot Clarity - stainless steel lift-off hinges or stainless steel Quad offset pivots Timber Doors: 44mm (1.73") - stainless steel butt hinges 54mm (2.12") - stainless steel butt hinges or stainless steel offset pivot Maximum height: 3000mm (118.11")
Acoustic rating	Edge Series: Rw35dB - single glazed Symmetry door in Microflush frame Rw41dB - double glazed Symmetry door in Microflush frame Rw39dB - single glazed Affinity door in Microflush frame Rw42dB - double glazed Affinity door in Microflush frame Axile Series: Rw32dB - Clarity door in Microflush frame with threshold seal Timber Doors: Rw31dB - 44mm timber door in Microflush frame with drop seal Rw33dB - 54mm rebated timber door in Microflush frame with drop seal
System compatibility	All door types, with the exception of Axile Pulse, are compatible with PurOptima's entire range of glass partitioning systems. Axile Pulse is designed for use with 117 Plus single glazing only.

PurOptima