

PurOptima 117 Plus

Product Data Sheet



PurOptima



Product facts

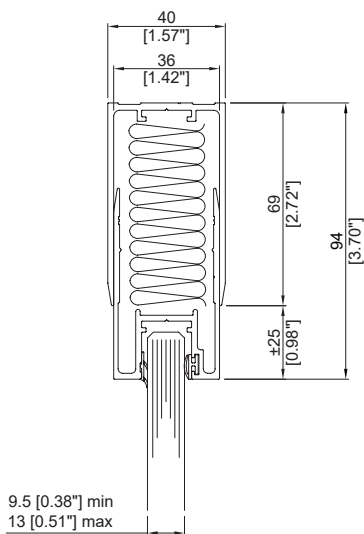
- Minimal single glazed system
- Dry jointed and fully demountable
- High-quality, low-carbon aluminum framework
- Fully integrates with Revolution 54 Plus and Revolution 100 systems
- Numerous door options
- Manufactured at Optima's UK factory and fabricated in the US

Acoustics

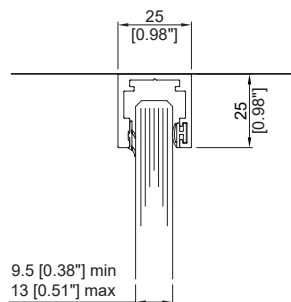
- Maximum tested acoustic rating of Rw38dB using 12.8mm (0.5") acoustic laminated glass

Deflection

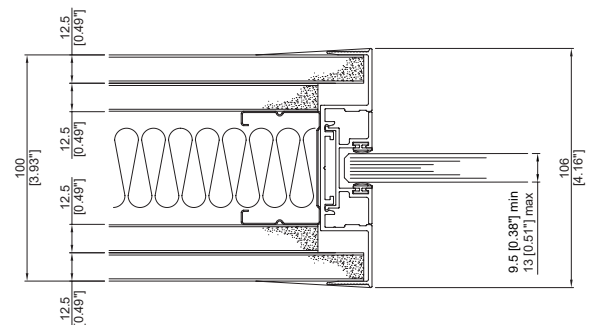
- Can accommodate up to $\pm 40\text{mm}$ (1.57") deflection



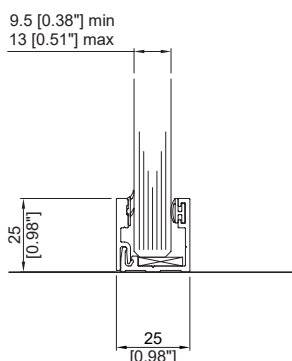
**SINGLE GLAZED HEAD TRACK
WITH EXTERNAL UPPER CHANNEL
 ± 25 [0.98\"] DEFLECTION**



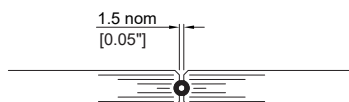
**SINGLE GLAZED HEAD TRACK
25mm [0.98\"] x 25mm [0.98\"]**



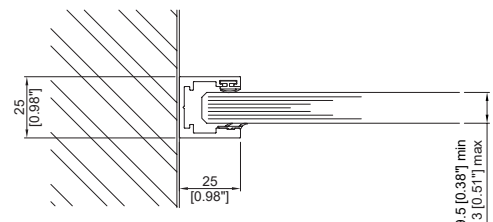
**TAPE BONDED
SINGLE GLAZED, 100mm [3.93\"] DOUBLE BOARDED**



**SINGLE GLAZED FLOOR TRACK
25mm [0.98\"] x 25mm [0.98\"] WITH GLAZING BEAD**



**Nebula Patented Butt-Joint
-12.8mm [0.50\"] & 14.3mm [0.56\"] glass**



**SINGLE GLAZED
25mm [0.98\"] x 25mm [0.98\"]
WALL ABUTMENT**

Product overview

System type	Single glazed
Head detail	Standard aluminium head channels available in 25mm (0.98"), 36mm (1.41") and 40mm (1.57") widths; 25mm (0.98") or 50mm (1.962) deep
Base detail	Standard aluminum base channels available in 25mm (0.98"), 36mm (1.41") and 40mm (1.57") widths; 25mm (0.98") or 50mm (1.962) deep, 25mm (0.98") x 12mm (0.47") aluminium floor angles also available
Deflection head options	2-part internal deflection heads: ±25mm (0.98") - 90mm (3.54") deep aluminum channel ±40mm (1.57") - 135mm (5.31") deep aluminum channel 2-part external deflection heads: ±25mm (0.98") - 94mm (3.70") deep aluminum channel ±40mm (1.57") - 140mm (5.51") deep aluminum channel
Door head detail	Head clip available for each glazing channel to accept door leaf
Door options	Compatible with Axile Pulse, Axile Clarity, Edge Symmetry, Edge Affinity, 44mm (1.73")/54mm (2.12") thick timber door
Glass thickness	12.8mm (0.5") thick glass available as standard, subject to panel width, height and acoustic rating
Maximum screen height	3000mm (118.11") subject to build configuration and access into building using 12.8mm (0.5") acoustic laminated glass. Please speak to our Technical Team for advice.
Glass to glass joint options	Nebula®, aluminum, ghost and taped dry joints available
Acoustic rating	Rw38dB - 12.8mm (0.5") acoustic laminated glass. Test certificates available upon request.

Product Comparison

Partition/ Wall Range	Acoustics STC/ RwdB up to max value	Single/ Double Glazed		Head Track/Floor Track					Deflection head options ±25mm (0.98")/40mm (1.57")	
		Single	Double	25mm (0.98") Depth	50mm (1.96") Depth	25mm (0.98") Width	36mm (1.41") Width	40mm (1.57") Width	Internal	External
Revolution 100, PurOptima Adaptable Wall & Shoreditch Edition	Rw51dB	✓	✓	✓	✓				✓	✓
Revolution 54 Plus & Shoreditch Edition	STC 46	✓	✓	✓	✓					✓
PurOptima 117 Plus & Shoreditch Edition	Rw38dB	✓		✓	✓	✓	✓	✓	✓	✓

Range of RAL colors and special paint finishes, powder coated or anodized

Door Range	Acoustics STC/ RwdB up to max value	Single/Double Glazed		Swing or sliding		Compatible with		
		Single	Double	Swing	Sliding	PurOptima 117 Plus	Revolution 54 Plus	Revolution 100
Kinetic	Rw36dB	✓			✓	✓		
Axile	Rw33dB	✓		✓		✓		
Edge	Rw42dB	✓	✓	✓		✓	✓	✓
Elite	Rw45dB		✓	✓	✓			✓
Timber	Rw33dB		n/a	✓		✓	✓	✓

Range of RAL colors and special paint finishes, powder coated or anodized
Range of door hardware including pull/lever handles, locks and hinges

PurOptima