

A modern office interior featuring a large glass partitioned area. The partition has a curved top and is framed in dark metal. Inside the partitioned area, there are several office chairs, a desk, and a bookshelf. The office is well-lit with natural light from large windows and artificial light from ceiling fixtures. The floor is covered with a light-colored rug. In the foreground, there is a wooden chair and a small table with a potted plant. The overall design is clean and professional.

Clear Thinking

› Partitions & Doors

PurOptima®





On a Mission to Set the Standard

PurOptima is quickly becoming the premier choice for demountable glass wall partitioning in North America. As the North American division of **Optima Group**, we combine world-class manufacturing and low-carbon materials with local installation and fabrication artistry.

Elevating Interiors

We collaborate with leading architectural and design studios worldwide, bringing unmatched expertise to every project. Our award-winning systems bring your vision to life with precision, reliability, and a commitment to excellence.

Made in North America

Our extrusions are sourced from the UK – the highest quality, **lowest embodied carbon aluminum available**. It's the right choice for the environment and for your projects.

Working alongside our trusted Project Delivery Partners (PDPs), we fabricate PurOptima systems right here using locally sourced glass. The result is the finest, **most sustainable** partitioning solution on the market, crafted for North America with homegrown talent.

PurOptima®

✉ Action@PurOptima.com
🌐 PurOptima.com

Contents

PurOptima

Introduction	2-3
Pioneering Partitions	6-7
Our Business	8-9
It's a Point of Principle	10-11

Projects

PepsiCo	13
Estée Lauder	14
X	15
BC Noho	16
Aecom	17

Products

	18-19
› Partitions	
PurOptima 117 Plus	20-21
Revolution 54 Plus	22-23
Revolution 100	24-25
Shoreditch Edition	26-27
PurOptima Adaptable Wall	28-29
› Doors	
Axile Series	30
Kinetic Series	31
Elite Series	32
Edge Series	33
Timber Doors	34
Tech Panel	35
› Product Details	
Product Comparison	36
Finishes	37
› Bespoke Design Service	38-39





Pioneering Partitions for over 30 years

› *We're committed to
minimizing carbon
emissions throughout
our products' lifecycle.*

MCM Studios, London
Revolution 54 Plus (Shoreditch Edition)





We are...



Uniquely **Sustainable**

Our aluminum contains up to seven times less embodied carbon than conventional options – making it the lowest carbon aluminum option available.

We're committed to minimizing carbon emissions throughout our products' lifecycle, leading the way in the Circular Revolution.



Naturally **Innovative**

As a global leader in glass wall partition systems, innovation drives everything we do. Our high-performance demountable partitions and doors provide flexible adaptability, superior acoustics, and stunning aesthetics – perfect for modern workplaces, from standard to bespoke.



Exceptionally **High-Performing**

PurOptima's solutions deliver best-in-class interior acoustical performance and suit most office settings where noise control and confidentiality are essential. All test results are third-party verified by qualified acousticians.



Distinctly **Structural**

Crafted from the highest-quality materials, our demountable glass wall systems deliver exceptional stability. Featuring innovative deflection head details, they provide superior design, structural integrity, and unmatched load performance.

Our Business



1. Collaboration

Our experienced team will help bring your vision to life. As your ideas take shape, we're here to guide you through the technical details. You can trust us to ensure your project is delivered on time and to the highest standards.



2. Design

Our high-performance systems seamlessly blend function with style, elevating commercial interiors to inspiring workspaces that boost productivity. You'll have access to a full range of design resources, from CAD and BIM files to expert hands-on support.



4. Local Project Delivery Partners

From ideation to installation, our expert Project Delivery Partners ensure seamless execution across North America. Trained in all aspects of PurOptima products, they provide localized support and a trusted team to bring your vision to life.



3. Manufacturing & Fabrication

PurOptima blends global manufacturing expertise with local craftsmanship for flawless project execution. Our process begins at our 5-acre, state-of-the-art facility in the UK. We then ship to North America for expert fabrication by our Project Delivery Partners using locally sourced glass.

> We're making a real difference – dedicated to the highest quality products with the lowest carbon impact.

Our awards



Innovative Wall & Ceiling Category 2023
Metropolis Planet Positive Award



USGlass Magazine's Sustainability Awards 2024
Environmental Excellence Award



It's a Point of Principle



Best Practice Manufacturing

As a group we hold the following ISO certifications:

- ISO 14001:2015 (Environment)
- ISO 9001:2015 (Quality)
- ISO 45001:2018 (Health & Safety)



Supporting Sustainable Building Standards

Specific to North America, we also have a full set of sustainability statements detailing how our systems contribute towards sustainability-driven construction, including:

- LEED (Leadership in Energy & Environmental Design) USGBC
- WELL Building Standard



Our Journey to Net Zero Carbon (NZC)

Our journey to leadership in sustainable construction started long before legislation. We are recognized internationally for our sustainability approach that addresses all areas of construction product manufacturing.

Our published strategy is to be NZC by 2035, sooner if possible.



Lowest Carbon Materials

We continually seek to use the least environmentally impactful materials while ensuring we track and reduce our environmental impact.

This includes the use of Hydro CIRCAL® aluminum. Manufactured with a minimum of **75% post-consumer scrap**, it has the **lowest embodied carbon** of any commercially available aluminum with only 1.9 CO2e/kg.

› *No other partitioning manufacturer can offer a lower embodied carbon aluminum system.*

 **Hydro** | Made with
Hydro Circa[®]

Projects

Since 1986, we have contributed to some of the most challenging commercial interior projects worldwide.

Some of these projects include huge global brands, like Apple, Microsoft, PepsiCo and TikTok. Others include close collaborations with renowned architectural studios such as Gensler, HOK, Norman Foster + Partners and Perkins&Will.

We are grateful for the trust all our customers place in us. The following pages highlight some of our more recent projects.



Gensler
Edelman, Francis House
©Vigo Jansons

PepsiCo

Location
Architect
General Contractor

Dublin, Ireland
MDO
Roccul

Project Overview

PepsiCo recently completed the fit-out of their new European headquarters in Dublin, Ireland. Located in the heart of the city, this minimalist, New York loft-style design helps create the atmosphere of the company's New York office.

Our acoustic glass partitions create a bright and airy working environment while ensuring acoustic privacy is maintained throughout. Furthermore, this fantastic project was also short-listed for Fit-Out project of the year at the Irish Fit Out Awards.



Revolution 54 (Shoreditch edition)



Products Installed

- **Revolution 54**
(Shoreditch Edition)
- **Edge Symmetry Doors**
(Shoreditch Edition)



Estée Lauder

Location
Architect
General Contractor

London, UK
MCM Architecture
BW: Workplace Experts

Project Overview

When Estée Lauder chose the landmark building 1 Fitzroy Place as its new European headquarters, its vision was to encourage collaboration by bringing together employees from 5 London offices into a single building. At the same time this single location had to allow each of the 25 different brands including MAC, Jo Malone and Clinique, to retain their own identity.

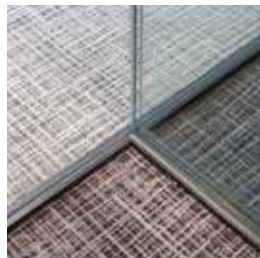
Estée Lauder appointed leading creative consultancy firm MCM to design the interior of this prestigious 144,000 sq. ft. scheme, set over 10 floors.

Products Installed

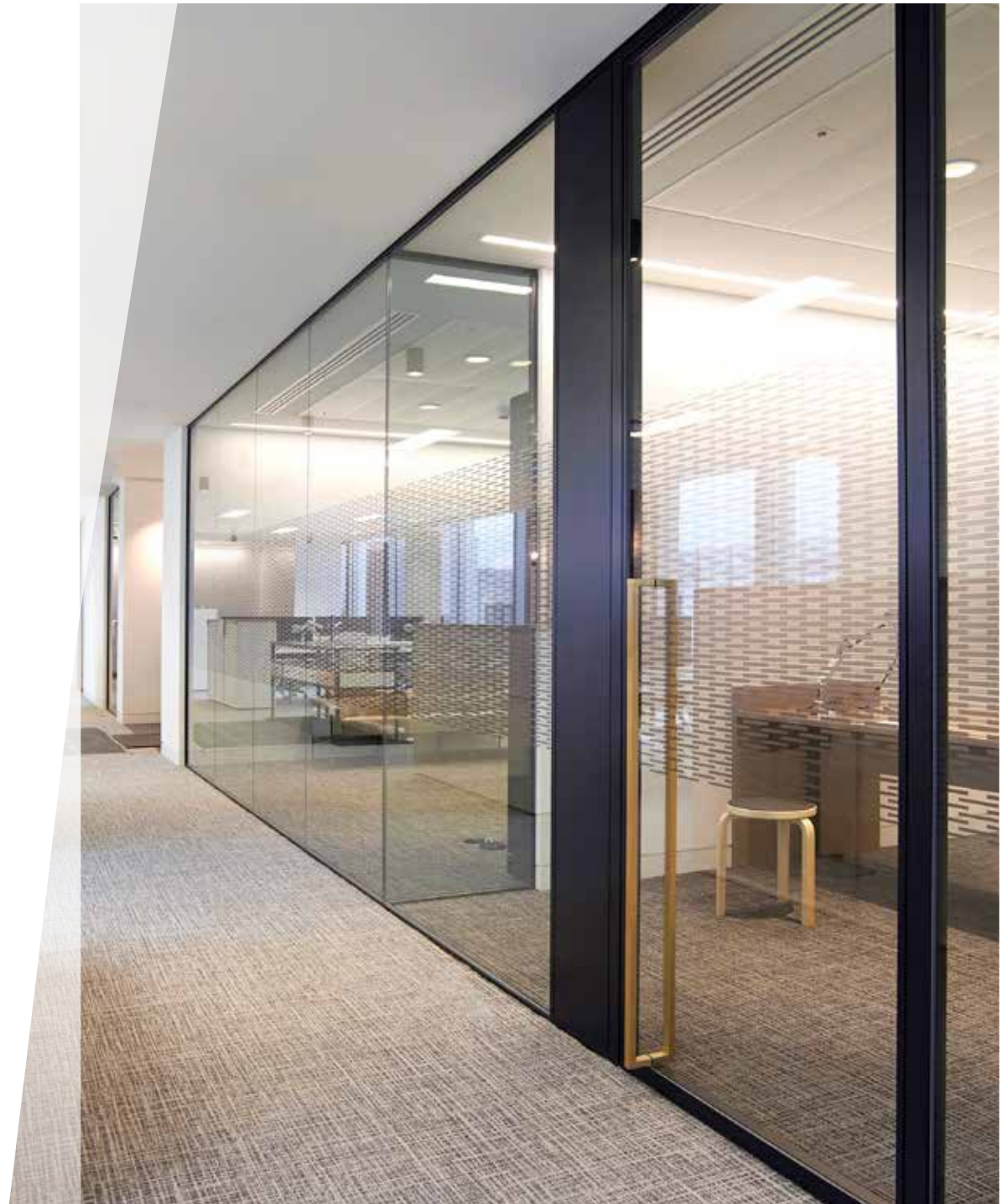
- **PurOptima 117 Plus**
Single-glazed
(Shoreditch Edition)
- **PurOptima 117 Plus**
Single-glazed
- **Revolution 54 Plus**
Double-glazed
(Shoreditch Edition)
- **Kinetic Aero Doors**
- **Edge Symmetry Doors**
Single-glazed



Edge Symmetry door
with bottom pivot



PurOptima 117 Plus with
Revolution 54 Plus DG fin





X

Location
Architect
General Contractor

Dublin, Ireland
MCA Architects
Flynn Construction

Project Overview

The interior glass wall partitioning in Dublin's X (formerly Twitter) headquarters is a great example of contemporary design. The fit-out saw 200 local staff moved into four floors at Cumberland Place, a building dating back to the 1970's which has been given a \$30.7 million makeover. We worked closely with our partner in Dublin, Walls to Workstations on this prestigious project.

Products Installed

- Revolution 100
- Timber Doors

BC Noho

Location **London, UK**
Architect **Barr Gazetas**
General Contractor **Tilbury Douglas**

Project Overview

For BC Noho we manufactured a beautifully curved partition to serve as their central atrium glazing. This partition was created using high-performing 0.7 in. (17.5 mm) partition glass.

The atrium glazing was required to fulfil a variety of functions, such as protecting against a one-story void. This is due to the curved system sitting on the first floor of the building. The grand aesthetic of this partition is apparent on entering the chic space. The clever design works in cohesion with the décor, matching the color of the structural steel beams throughout the space.

Products Installed

- **Revolution 54 Plus**
(Shoreditch Edition)
- **Bespoke Curved Partition**
(Shoreditch Edition)
- **Edge Affinity Double Doors**
(Shoreditch Edition)



Aecom

Location
Architect
General Contractor

London, UK
Aecom
Overbury

Project Overview

When global engineering firm AECOM chose to consolidate more than 1,000 employees from across the City into its new office in Aldgate Tower, the big idea was to encourage interaction amongst staff and collaborative working across all departments, including Strategy, Design and Engineering.

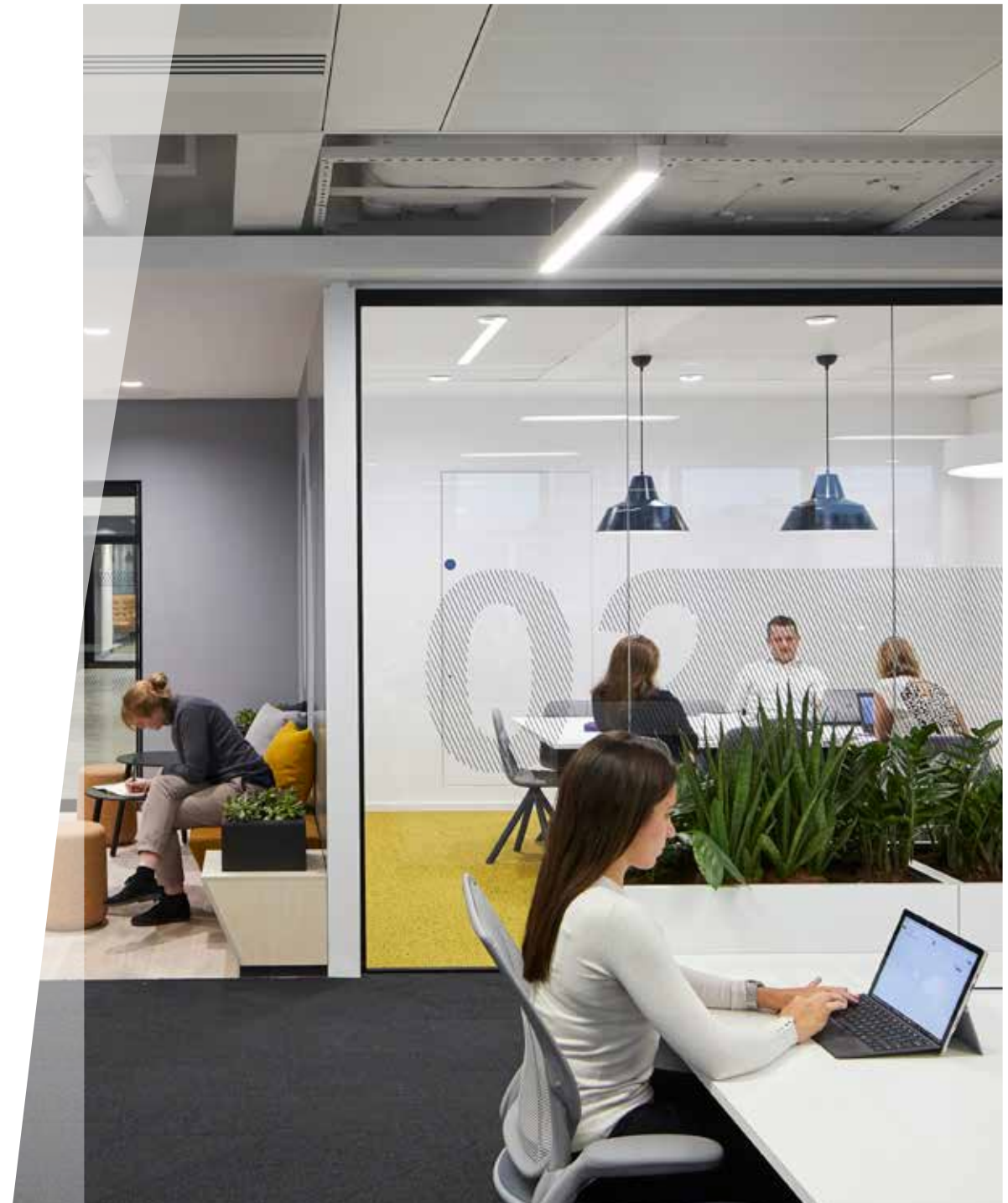
Agile working was to be a key feature of the new culture, with 100% of all staff moving to this new workspace model. With an average of 150 visitors per day, both internal and external, this had to be a space that made an impression on staff and clients alike.



PurOptima 117 Plus with single glazed Edge-Symmetry door in Microflush frame & room booking system (Shoreditch Edition)

Products Installed

- **PurOptima 117 Plus**
Single-glazed
(Shoreditch Edition)
- **PurOptima 117 Plus**
Single-glazed
- **Edge Symmetry Doors**
Single-glazed
(Shoreditch Edition)



Products

We're dedicated to manufacturing the world's highest-quality, lowest-carbon glazed door and partitioning systems.

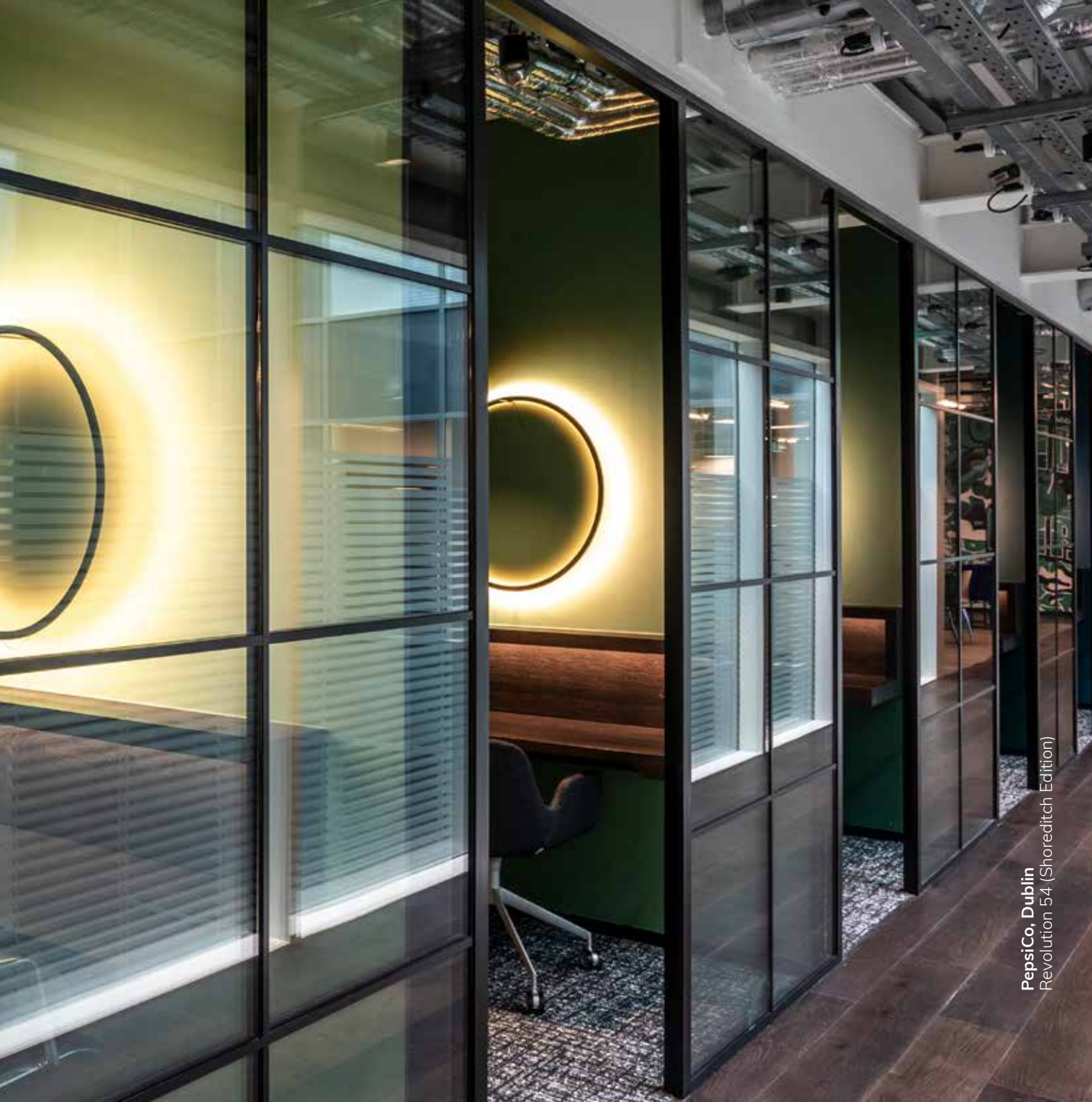
By collaborating closely with architects and designers, we ensure our systems meet both performance and aesthetic goals. At the same time, we design with practicality in mind – solving common on-site installation challenges.

Bring your vision to life

Exceptional products deserve exceptional installation to achieve full impact. That's why our Project Delivery Partners are extensively trained to ensure flawless execution, giving you complete confidence in every project.

That's the **PurOptima Promise** – our commitment to your project's success.





PepsiCo, Dublin
Revolution 54 (Shoreditch Edition)



Partitions

- › PurOptima 117 Plus
- › Revolution 54 Plus
- › Revolution 100
- › Shoreditch Edition
- › PurOptima Adaptable Wall



Doors

- › Kinetic Series
- › Axile Series
- › Edge Series
- › Elite Series
- › Timber



Tech Panels



PurOptima 117 Plus

PurOptima 117 Plus is a timeless classic. Our elegant, single-glazed partition system features minimal head and base channels with discreet glass to glass dry joints. It's the perfect choice to create the illusion of vast areas of unsupported glass when designing private office cubicles.

Acoustics: Up to STC 40
Deflection: ± 1.6 in. (40 mm)



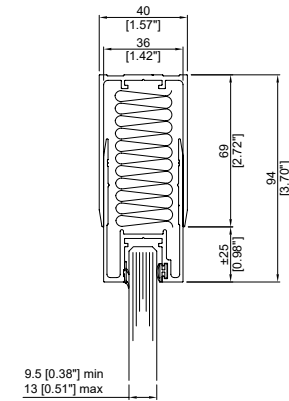
PurOptima 117 Plus
Floor channel with Microflush frame



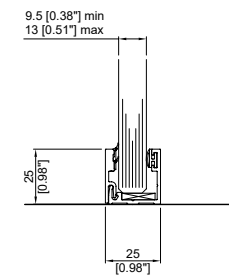


Reliance International, GCC
PurOptima 117 Plus
with Edge Affinity doors

Details



Single glazed head track with
external upper channel
±25mm [0.98"] deflection



Single glazed floor track
25mm [0.98"] x 25mm [0.98"]
with glazing bead



Multinational Music Company
Revolution 54 Plus



Revolution 54 Plus

A favorite among designers, **Revolution 54 Plus** combines exceptional acoustical performance with creative flexibility and slimline aesthetic appeal.

Choose between single or double-glazed options to meet your project's acoustic and design needs. Single-glazed configurations offer centered or offset positioning, giving you greater freedom to achieve your vision.

Adapts with you

Future-ready by design, Revolution systems are fully demountable and easily adapt to evolving acoustical needs. Simply switch between single and double glazing without dismantling frames – for faster, less disruptive renovations.

Acoustics: Up to STC 48

Deflection: ±1.6 in. (40 mm)



Revolution 54 Plus
With Microflush door frame



Revolution 54 Plus
Head channel & fin

Awards

 Architectural Products Magazine
Product Innovation Award 2023

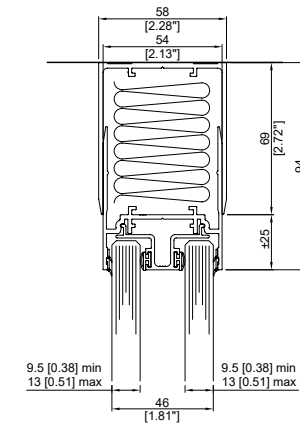
 Architectural Record Magazine
Product of the Year 2023

 BD&C Magazine
Top 75 Building Products 2023

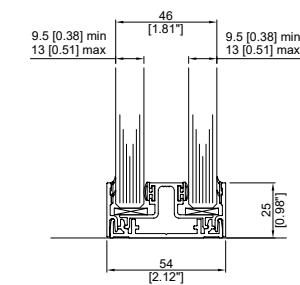


Department of Finance, GCC
Revolution 54

Details



Double glazed head track with
external upper channel
 $\pm 25\text{mm}$ [0.98"] deflection



Double glazed floor track with
25mm [0.98"] glazing bead



Revolution 100

The ultimate solution for complete workspace design, Revolution 100 accommodates modern “infinity” glass designs or a bold mullion aesthetic.

Available in both single and double glazing, it provides unparalleled acoustic flexibility across your entire project.

Adapts with you

Future-ready by design, Revolution 100 is fully demountable and effortlessly adapts to evolving acoustical needs. Switch between single and double glazing without dismantling frames – for faster, less disruptive renovations.

Enhanced Acoustics

Designed exclusively for Revolution 100, our Elite series doors deliver superior acoustic insulation, providing privacy and creating quieter, more productive spaces.

Acoustics: Up to STC 53*

Deflection: ± 1.6 in. (40 mm)

*Some STC values are estimated based on best available data at time of publishing. For full details, please speak to our Technical team.



Revolution 100 double glazed
Part height screen



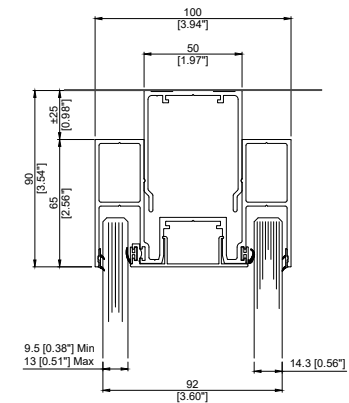
Revolution 100 with **Elite Aero**
Pocket sliding doors



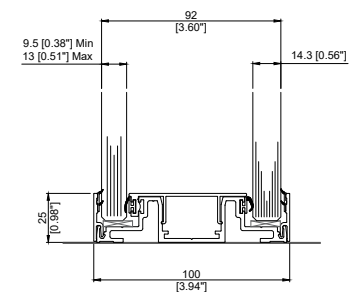


Francis Crick Institute, London
Bespoke Revolution 100 with LED Lighting

Details



Head track with inner
upper channel $\pm 25\text{mm}$ [0.98"]
deflection double glazed



25mm [0.98"] base track
double glazed



Kinetic Align sliding doors
Shoreditch Edition (bespoke reeded)



Shoreditch Edition

As the demand for industrial, urban-inspired designs continues to grow, PurOptima launched the Shoreditch Edition to capture the essence of the 'New York Loft' aesthetic.

Exclusively available on our Revolution partition systems, Shoreditch features a slimline aluminum frame bonded to the glass. This design ensures structural stability and acoustic performance while delivering the appearance of a hand-crafted, traditional iron-framed partition – perfectly embodying the trend.



Shoreditch Edition
With bonded aluminum plates



Shoreditch Edition
Bespoke effect



Shoreditch Edition
Reeded effect



The Beyond Collective, London
PurOptima 117 Plus (Shoreditch Edition)



PurOptima

Adaptable Wall

Seamlessly integrating with our Revolution 100 system, the Adaptable Wall delivers style, functionality, and unmatched versatility.

Its fully modular, demountable design supports a diverse range of materials and finishes – from fire-rated fabrics to lush green walls – giving you complete creative freedom.

Smart Installation

A forward-thinking alternative to traditional drywall, the Adaptable Wall ensures a faster, cleaner installation with no wet trades required – minimizing disruption and streamlining the entire fit-out process.

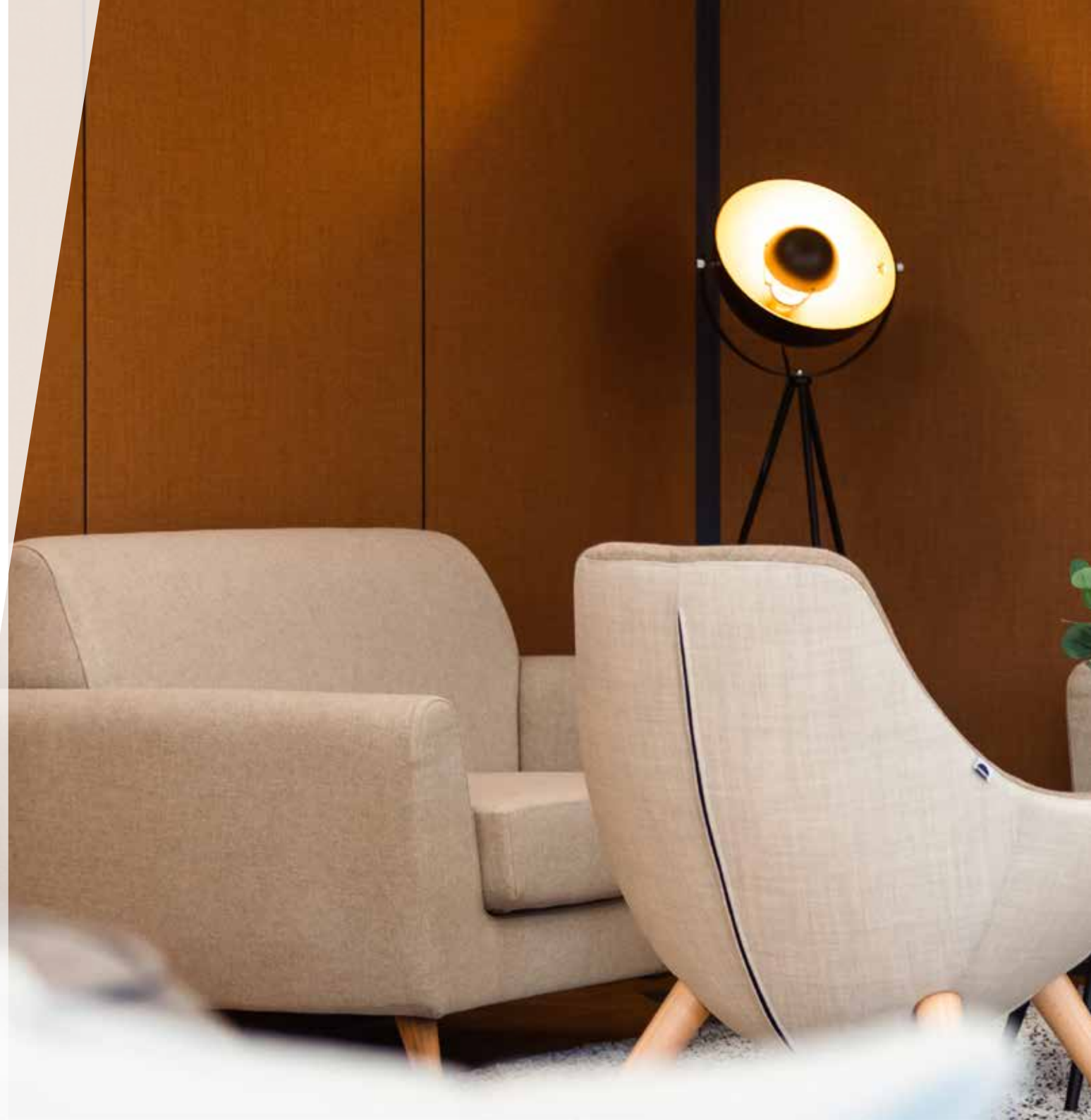
Designed for Dynamic Spaces

Perfect for open-plan environments, it effortlessly creates adaptable zones for impromptu meetings and focused collaboration – striking the ideal balance between openness and privacy, without the constraints of fixed walls.

Acoustics: Up to STC 51*

Deflection: ± 1.6 in. (40 mm)

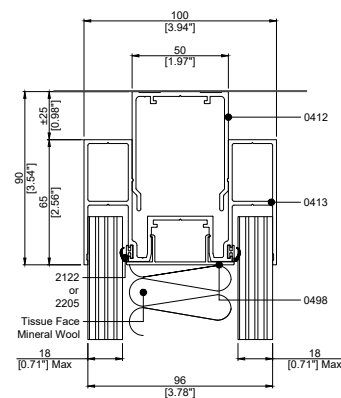
*Some STC values are estimated based on best available data at time of publishing. For full details, please speak to our Technical team.



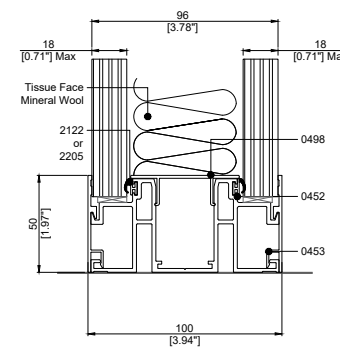


Rider Levett Bucknall, Manchester
PurOptima Adaptable Wall with Kvadrat fabric

Details



±25mm [0.98"] inner deflection
head track double solid panel



50mm [1.97"] base track
double solid panel



Magnetic writable glass



Industrial finish options



Laminate panels (MFC)



Living green wall



Axile Series

Doors

The Axile series provides a pivot-hinge alternative to our Kinetic sliding doors, offering the same clean, elegant aesthetic.

For a completely frameless look with chic, clear lines, Axile Pulse is the perfect choice. If enhanced acoustic performance is required, Axile Clarity integrates with a minimal 'Microflush' frame, combining style with function.

Axile Pulse | Frameless

Acoustic Performance: Minimal

Axile Clarity | Microflush Frame

Acoustic Performance: STC 30



Axile Pulse double door set



Veolia, Dubai
Axile Clarity



Kinetic Series Doors

The Kinetic range of elegant, space-saving sliding doors is designed to integrate effortlessly with our single-glazed PurOptima 117 Plus partitioning system.

Whether you're aiming for a clean, frameless aesthetic or prioritizing acoustic performance, Kinetic offers a tailored solution to match your design vision.

Kinetic Light | Frameless
Acoustic Performance: Minimal

Kinetic Seal | Frameless
Acoustic Performance: STC 24*

Kinetic Aero | Framed
Acoustic Performance: STC 33*

Kinetic Align | Framed
Acoustic Performance: STC 36*

*Some STC values are estimated based on best available data at time of publishing. For full details, please speak to our Technical team.



Kinetic Light
Sliding door



Kinetic Seal
Sliding door



Kinetic Aero
Bi-parting sliding doors



Grain House, London
Kinetic Align
Photo: Philip Vile



Elite Series

Doors

Performance without compromise.

The Elite series – our highest-performing range of framed pivot-hinge and sliding glass doors – is engineered to seamlessly complement our Revolution 100 partition system. Setting a new industry benchmark, Elite delivers acoustic performance comparable to high-spec timber door sets – with the added benefit of uninterrupted natural daylight.

Elite Aero | Framed

Acoustic Performance: STC 39*

Elite Symmetry | Framed

Acoustic Performance: STC 44

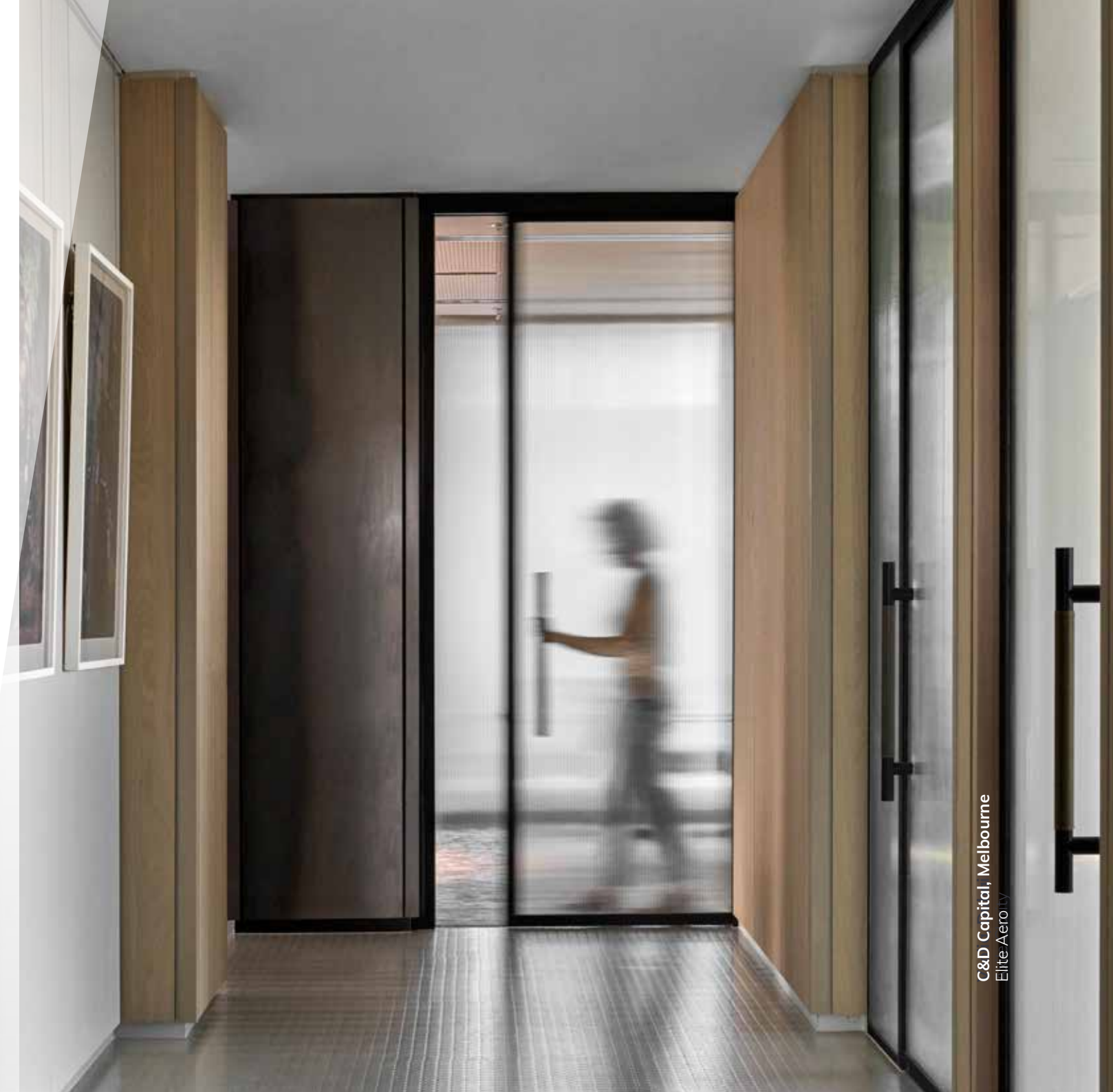
Elite Affinity | Framed

Acoustic Performance: STC 45

*Some STC values are estimated based on best available data at time of publishing. For full details, please speak to our Technical team.



Elite Affinity



C&D Capital, Melbourne
Elite Aero



Edge Series Doors

Glass doors have traditionally struggled to match the acoustic performance of timber. The challenge? Effectively sealing the door to prevent sound leakage.

The Edge series is the result of extensive R&D, designed to overcome this challenge with precision. Our innovative range of framed single and double-glazed Edge door options delivers acoustic performance on par with bespoke timber doors – an impressive achievement in door design.

Edge Bi-Fold | Framed

Acoustic Performance: STC 33

Edge Symmetry | Framed

Acoustic Performance: Up to STC 41

Edge Affinity | Framed

Acoustic Performance: Up to STC 42

Edge Affinity Plus | Framed

Acoustic Performance: Up to STC 41



Edge Bi-Fold (Shoreditch Edition)



Edge Symmetry (Shoreditch Edition)



Edge Affinity Plus



Coverys, London
Edge Affinity



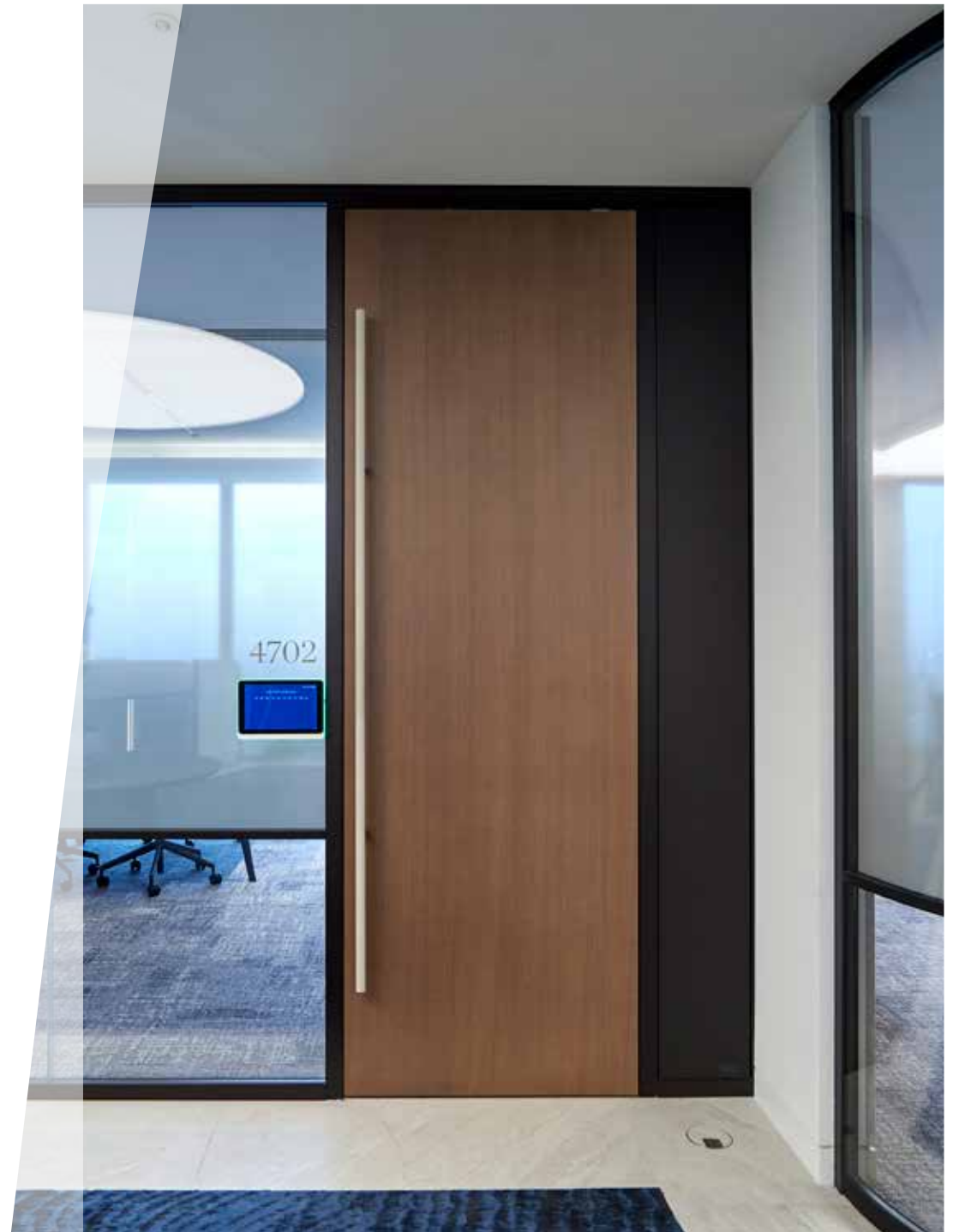
Timber Doors

Engineered timber doors and door sets continue to be a popular choice, offering a warm, natural, and tactile finish.

Supplied as complete door sets, our timber doors and frames are precision-crafted to meet your design intent, whether you require split frames or rebated frames for a seamless, flush-fitting leaf.

1.7 in. (44 mm) Timber Door
Acoustic Performance: STC 38

2.1 in. (54 mm) Timber Door
Acoustic Performance: STC 38





Tech Panel

Room booking technology prevents the mishap of entering the wrong meeting, but managing cabling with glazed partitions can be challenging.

Our Tech Panels discreetly conceal cables while maintaining acoustic integrity – creating a seamless, integrated aesthetic that surpasses bolt-on alternatives.

We offer two standard Tech Panels, plus bespoke options:

In-Line

A flush, slimline look for Revolution 54 Plus and Revolution 100

3D

A 'picture-frame' design with added cavity depth for Revolution 54 Plus and PurOptima 117 Plus


Available finishes:

- Powder-coated aluminum
- Anodized aluminum
- Face-laminated timber
- Back painted glass


Product Details

Product Comparison

Partition Range

	Acoustics STC (max value)	Single Glazed	Double Glazed	Head/Floor Track					Deflection Head Options ±25mm (0.98")/40mm (1.57")	
				Depth 25mm (0.98")	Depth 50mm (1.96")	Width 25mm (0.98")	Width 36mm (1.41")	Width 40mm (1.57")	Internal	External
Revolution 100, PurOptima Adaptable Wall & Shoreditch Edition	STC 53	●	●	●	●				●	●
Revolution 54 Plus & Shoreditch Edition	STC 48	●	●	●	●					●
PurOptima 117 Plus & Shoreditch Edition	STC 40	●		●	●	●	●	●	●	●

Door Range

	Acoustics STC (max value)	Single Glazed	Double Glazed	Swing Door	Sliding Door	Compatible with		
						PurOptima 117 Plus	Revolution 54 Plus	Revolution 100
Kinetic Series	STC 36	●			●	●	●	
Axile Series	STC 30	●		●		●		
Edge Series	STC 42	●	●	●		●	●	●
Elite Series	STC 45	●	●	●	●			●
Timber Doors	STC 38			●		●	●	●

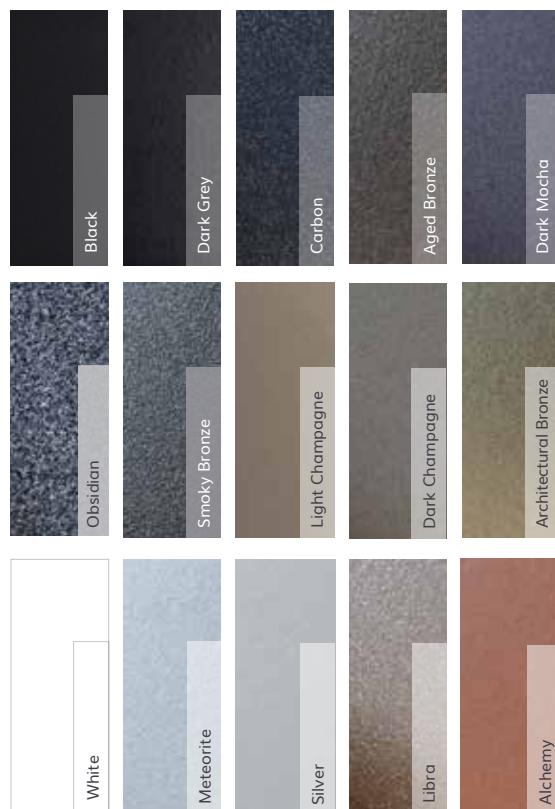
Some STC values are estimated based on best available data at time of publishing. For full details, please speak to our Technical team.
Range of RAL colors and special paint finishes, powder coated or anodized.
Range of door hardware including pull/lever handles, locks and hinges.

Finishes

Discover our meticulously curated selection of finishes, designed to elevate any partition or door frame with style and sophistication.

From rich textures to striking colors, our range adds depth and individuality to any space. For truly distinctive projects, we also offer bespoke finishes crafted to your exact specifications.

Please contact our team to discuss and we would be delighted to assist.



GAM, London
Brushed Bronze
Bespoke finish

Bespoke Design Service

At PurOptima, our standard partition systems set the benchmark for performance and aesthetics.

But where we truly excel is in crafting bespoke solutions – blending innovation, craftsmanship, and design expertise to transform ambitious visions into reality.



Shoreditch Edition (bespoke)

Realizing Your Vision

If you're looking to elevate your project from excellent to extraordinary, our bespoke solutions have been featured in some of the world's most architecturally acclaimed spaces. With a North American team of specialists and the global backing of the Optima Group, we have the experience and resources to ensure your project stands out – and wins awards.

In Collaboration

Collaboration is at the heart of everything we do. Our designers work closely with our manufacturing team to ensure every aspect of product testing is meticulously considered. From precision-engineered mock-ups to custom samples, we refine every detail to bring your vision to life.

Our Legacy

We are proud to have contributed to iconic projects where our bespoke glass partitions have helped shape breathtaking workspaces. More than just functional solutions, our creations leave a lasting legacy of design excellence.



Dealogic, London
Raked glass



Malvyn, UAE
PurOptima 117 Plus
(Shoreditch Edition)

🌐 PurOptima.com ✉ Action@PurOptima.com

in PurOptima @puroptima_glass ▶ Optima Systems

PurOptima®